

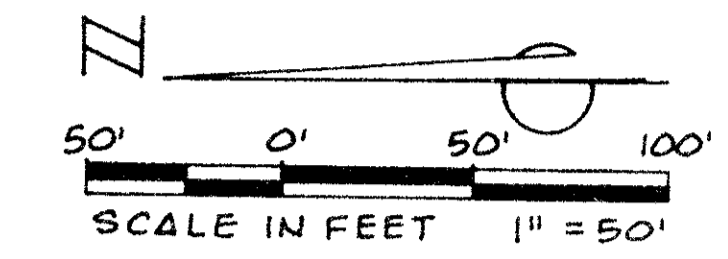
DRAWING NUMBER
49/100

100

Fountains South

A PLANNED UNIT DEVELOPMENT

REPLAT OF TRACTS A1 AND B1

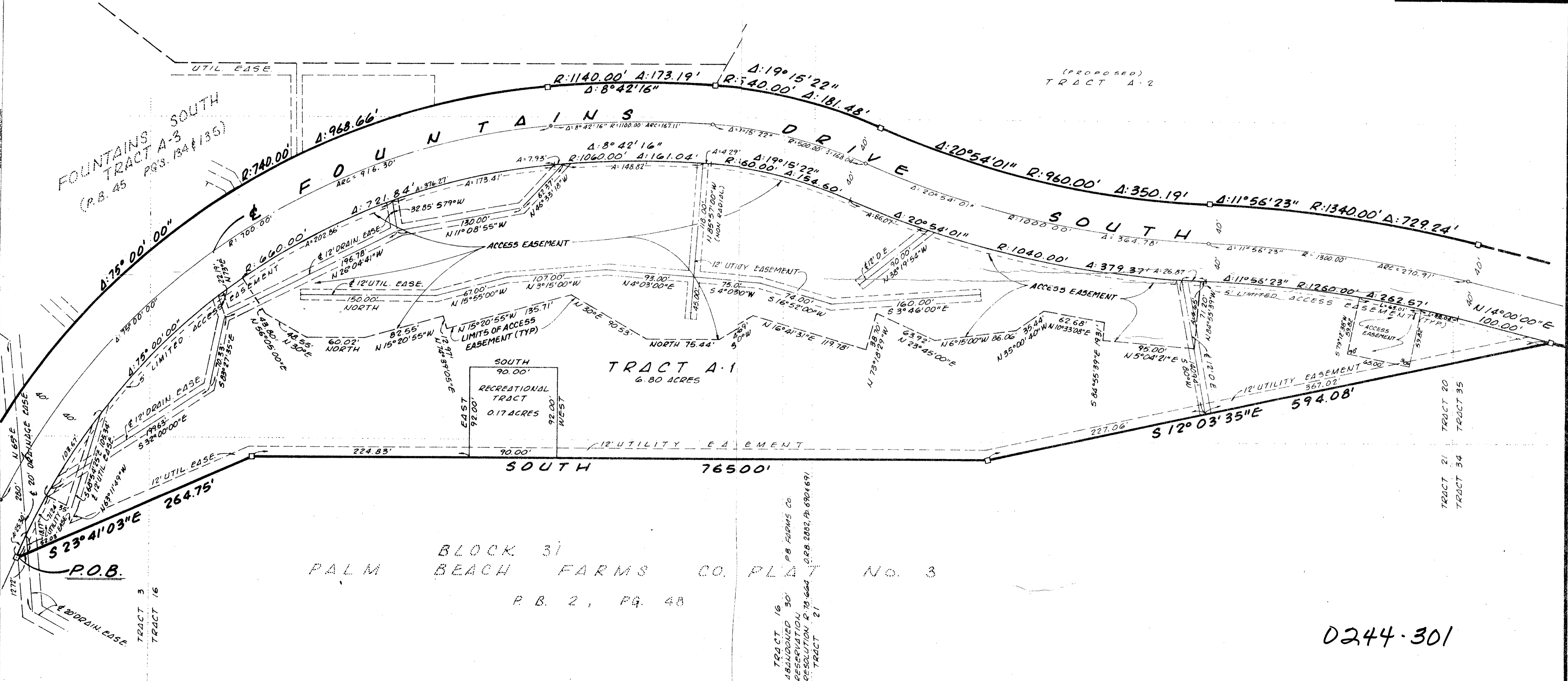


DRAWING NUMBER

DRAWING NUMBER

DRAWING NUMBER

PLAN HOLD CORPORATION • IRVINE, CALIFORNIA
REGISTERED PROFESSIONAL LAND SURVEYORS
REGISTERED NUMBER 02438



BLOCK 31
PALM BEACH FARMS CO. PLAT NO. 3
P.B. 2, PG. 48

TRACT 16
ABANDONED
RESOLUTION
RESOLUTION P. 78-664
O.P.B. 2002, P. 690169,
TRACT 21

0244-301

49/100

ADAR & BRADY, INC. CONSULTING ENGINEERS & LAND SURVEYORS		FOUNTAINS SOUTH REPLAT OF TRACTS A1 AND B1 RECORD PLAT	
WEST PALM BEACH			
Dr. MCH	F.B.	Scale 1" = 50'	SHEET
CK.	PG.	Date SEPT., 1984	FP 823 3 OF 3